

**2013**  
**INFORMATIONAL**  
**GUIDE**



**WITH TWO LOCATIONS TO SERVE YOU IN  
ALBANY & FARMINGTON**

**FOR MORE INFORMATION  
CALL 800-685-4521**

## Adjuvants

### Aqua Fixx 216

Wetting Agent

Aqua fix 216 is a surface active agent that helps water move into the upper area of the profile to aid turf growth, especially where water movement has been reduced during drought or localized dry spot. If water cannot penetrate and wet the soil, the availability for uptake by plants is reduced. The result is plant stress or the inability of seeds to germinate.

Rate: 2-16 ounces per 1,000 square feet

Available in: 2.5 gal jug



### Aqua Fixx DG

Wetting Agent

Aqua Fixx DG granular soil wetting agent helps improve problematic soil in dry areas that won't wet, areas where water pools on the surface without penetrating into the soil matrix, and high traffic areas where the soil is heavily compacted.

Rate: 2-3 pounds per 1,000 square feet

Available in: 50 lb. bag



### Chameleon

Adjuvant

Chameleon is a non-ionic surfactant with UV technology, pH buffer, compatibility agent, anti-foam, and anti-drift. Chameleon improves herbicide performance by adhering chemical to the plant surface, improving penetration and extending performance with UV technology.

Rate: 8 ounces per acre with herbicides

1-3 pints per 100 gallons of water

Available in: 2.5 gal jug



### Meth-N-Oil

Adjuvant

Meth-N-Oil is a patent-pending adjuvant developed primarily to increase the penetration of systemic post-emergent herbicides; it also offers good spreading characteristics for herbicide coverage during adverse weather conditions.

Rate: 2-4 quarts per 100 gallons

Available in: 1 gal jug



### Transfilm

Adjuvant

Prevents moisture loss through the leaves by transpiration; for trees, shrubs, and turf. Provides the best protection available from winter desiccation, windburn, sun-scald and salt air damage; reduces plant water requirements during drought conditions.

Rate: 1-2 quarts per 100 gallons

2.5 gallons per acre

Available in: 2.5 gal jug



## Fungicides

### Clearscape T&O

T&O Fungicide

Clearscape has DMI fungicide technology that controls disease by an inhibiting process related to fungal biosynthesis, which disrupts target pathogen growth. This product provides rapid plant uptake, preventative and curative control, low use rates, application flexibility and delayed resistance development. Clearscape controls anthracnose, dollar spot, brown patch, pink and gray snow mold, gray leaf spot, and many other diseases in turf. It controls southern blight, leaf spot, anthracnose, cab and powdery mildew in ornamentals.

Rate: 0.6 ounces per 1,000 square feet

Available in: 1 gal jug



### Echo 6F ETQ

T&O Fungicide

Echo 6F ETQ Innovative technology enhances turf quality, while providing protection for more than 75 diseases. Echo 6F ETQ combines proven, economical fungicide with novel pigment for excellent results and value.

Rate: 2-5.5 ounces per 1,000 square feet

Available in: 2.5 gal jug



### Echo 720 T&O

T&O Fungicide

Echo 720 is a proven, long-residual contact fungicide that protects turf and ornamentals from more than 75 different diseases. This product is ideal for use with newer fungicides to manage their resistance and broaden their disease control spectrum.

Rate: 2-5.5 ounces per 1,000 square feet

Available in: 2.5 gal jug



### Iprodione 2SE SPC

T&O Fungicide

Iprodione Pro 2SE fungicide provides tremendous value in the fight against foliar and soil-borne disease in commercial greenhouses and nurseries. It prevents key leaf spot diseases, botrytis blight, cylindrocladium blight and wilt, and rhizoctonia and root rot.

Rate: 2-8 ounces per 1,000 square feet

Available in: 2.5 gal jug



### PCNB Turfcide 400

T&O Fungicide

Prevent soil borne diseases in turf and labeled ornamentals. Turfcide is an excellent solution for control of persistent diseases of turf — from snow mold and brown patch to leaf spot and dollar spot. Preventative applications may be made in spring and fall. Applied as a soil treatment, Turfcide also provides protection against a variety of soil borne diseases in greenhouse, shade house, nursery, landscape and field grown ornamentals as well as in interiorscapes.

Rate: 5-24 ounces per 1,000 square feet

Available in: 2.5 gal jug



## Fungicides

### **Pegasus DF**

**T&O Fungicide**

Pegasus HPX is the most advanced formulation of Chlorothalonil. Pegasus provides superior control, longevity, tank-mix options, and performance. Controls and prevents dollar spot, brown patch, anthracnose, red thread gray snow mold, and leaf spot.

Rate: 0.75-2.5 pounds on ornamentals & trees  
5-8.8 ounces on turf  
Available in: 5 lb. jug



### **Peregrine/TM/C**

**T&O Fungicide**

The combination of 50% Chlorothalonil with 16.6% Thiophanate Methyl provides long-lasting all purpose fungicide control with both contact and systemic modes of action against brown patch, dollar spot, gray leaf spot, anthracnose, summer patch, fusarium blight, powdery mildew, leaf spot, blights, stem, crown, and root rot.

Rate: 8.25-16 pounds per acre  
Available in: 5 lb. jug



### **Phyte-Off**

**Plant Nutrient**

Phyte-Off is a foliar fertilizer that helps manage summer stress syndrome by improving plant's stress tolerance and recovery. Phyte-Off is an ideal supplement to a well-balanced fertilizer program, and can be used as a stand-alone nutrient or tank-mixed with fungicides.

Rate: 1-3 ounces per 1,000 square feet  
Available in: 2.5 gal jug



### **Propiconazole 14.3/ Kestrel Mex**

**T&O Fungicide**

Propiconazole controls 49 turf and ornamental diseases including pink and gray snow molds, rust, gray leaf spot, dollar spot, summer patch, anthracnose, powdery mildew, and many more.

Rate: 22-88 ounces per acre  
.5-4 ounces per 1,000 square feet  
Available in:  
1 quart/1 gal/2.5 gal/7.5 gal jug



### **ProPlant**

**T&O Fungicide**

ProPlant prevents and cures many Pythium diseases, including damping off, cottony blight, grease spot, and root rot on turfgrass and ornamental plants. It is highly systemic for quick absorption and translocation, with multi-site mode of action that prevents resistance problems. ProPlant can be applied following germination or to established turf.

Rate: 2-3 ounces per 1,000 square feet  
1.3-4 ounces per 1,000 square feet  
Available in: 1 gal jug





## Fungicides

### Shaw's Fungicide with Bayleton

T&O Fungicide

Shaw's Bayleton/Fungicide contained 1.0% Bayleton on a corn cob granule. This allows for easier application with the homeowner type spreaders. Bayleton is absorbed rapidly and works systemically from within the plant. Rainfall or sprinkler irrigation soon after application will assure rapid systemic uptake. Because of the broad spectrum of diseases controlled with both preventative and curative rates of Shaw's Bayleton/Fungicide homeowner product satisfaction will be higher.

Rate: 0.75-3 lbs. per 1,000 square feet  
Available in: 30 lb. bag



### T-Bird 85 WDG

T&O Fungicide

T-Bird is a systemic broad spectrum, preventative disease fungicide that provides low cost preventative protection against brown patch, dollar spot, gray leaf spot, anthracnose, summer patch, fusarium blight, powdery mildew, leaf spot, blight, stem, crown, and root rot. Since application rates vary considerably depending on disease pressure and mode of application see label for directions.

Rate: 1.2-3.53 ounces per 1,000 square feet  
Available in: 5 lb. jug



### T-Methyl 4.5F SPC/Granular SPC

T&O Fungicide

Preventive, curative, superlative disease control, T-Methyl 4.5F Fungicide offers it all. It protects a broad spectrum of crops against a wide range of diseases with effective, systemic disease control, which is why thiophanate-methyl is one of the most widely used fungicides in the world. T-Methyl 4.5 F effectively protects new growth from a broad spectrum of diseases including white mold, powdery mildew, rusts, brown spot, brown rot, Fusarium and Rhizoctonia root rot.

Rate: 1.75-3.5 pounds per 1,000 square feet  
Available in: 30 lb. bag



## Growth Regulators

### CutDown

T&O Growth Regulator

CutDown contains Paclobutrazol - a systemic growth regulator for turf grass and trees. It works by inhibiting gibberellin biosynthesis (elongation of cells). CutDown slows vertical growth of grass and reduces mowing for up to 8 weeks after application. The frequency of mowing can be reduced by up to 50% during the period of effective retardation.

Rate: Greens .1-.25 ounces per 1,000 square feet  
Fairways .25-.5 ounces per 1,000 square feet  
Available in: 1 gal jug



### Goldwing

T&O Growth Regulator

Goldwing is used to manage turf growth, improve quality and reduce stress in warm and cool season grasses. Goldwing suppresses the growth of bentgrass, Kentucky bluegrass, ryegrass, fescue, and most other grasses. It improves color, lateral stems and root mass development while inhibiting vertical shoot growth thus reducing the number of cuttings per month by half. Applications of Goldwing produce healthier turf, durable blades, and reduced seasonal stress.

Rate: Greens .125 ounces per 1,000 square feet  
Fairways .25 ounces per 1,000 square feet  
Available in: 1 gal/7.5 gal jug



Always check product labels for specific rates.



## Pre-Emergent Herbicides

### Prodiamine 65 WDG

Crabgrass Control

Prodiamine 65 WDG - Broad Spectrum Pre-Emergent Herbicide is an excellent weed control product, especially as a pre-emergent herbicide and as a grass and broadleaf weed killer. Flexible application allows for both spring and fall use providing season long crabgrass and broadleaf weed control. Effectively controls annual bluegrass.

Rate: 0.75-1 pound per acre  
Available in: 5 lb. jug



### Quincept

Broadleaf & Crabgrass Control

Versatile post-emergent control of both grassy and broadleaf weeds. Produces fast visual control of crabgrass, foxtail, barnyard grass, and many broadleaf weeds. Quincept contains Quinclorac, 2,4-D, and Dicamba. Add Chameleon to increase performance.

Rate: 2.6-2.9 ounces per 1,000 square feet  
7-8 pints per acre  
Available in: 64 oz./2.5 gal jug



### Tupersan

Crabgrass Control

Tupersan is safe to apply when seeding a new lawn without causing injury to germinating seedlings of most cool-season grasses. Active ingredient is Siduron. May be applied through the hydro-seeder or with a conventional spray tank.

Rate: 4-12 pounds per acre  
Available in: 4 lb. bag



## Post-Emergent Herbicides

### 4-Speed XT

4-way Broadleaf Herbicide

4-Speed XT is a post-emergent herbicide which delivers powerful weed control-faster. With its high-powered combination of four active ingredients, 4-Speed XT makes fast work of even the toughest weed control challenges. The combination of Pyraflufen, Triclopyr, 2,4-D, and Dicamba controls hundreds of broadleaf weeds in turf, including difficult species like oxalis, wild violet, spurge, and many more. Add Chameleon to increase performance at low volume rates.

Rate: 0.67-1.5 ounces per 1,000 square feet  
3-4 pints per acre  
Available in: 1 gal/2.5 gal jug



### Millennium Ultra II

Commercial Use Only  
Broadleaf Herbicide

For use on commercial turf, golf courses, and sod fields - not approved for residential lawns. Millennium Ultra II is a herbicide for effective control of broadleaf weeds especially; clover, wild parsnip, knotweed, oxalis, cocklebur, plantain, chickweed, thistle, dandelion, and many more. Millennium Ultra II contains 2,4-D, Clopyralid, and Dicamba. Add Chameleon to increase performance at low volume rates.

Rate: 0.75-1.1 ounces per 1,000 square feet  
2-3 pints per acre  
Available in: 2.5 gal jug



Always check product labels for specific rates.



## Post-Emergent Herbicides

### Quinclorac/Star/Eject 75 DF

Crabgrass Control

Controls annual grasses including large and smooth crabgrass, green, yellow and giant foxtail, and barnyard grass. Also works on broadleaf weeds such as clover, dandelion, morning glory, and wild violet. This may be added to Triplet SF for improved broadleaf control. Add Meth-N-Oil for increased results.

Rate: 0.367 ounces per 1,000 square feet  
1 pound per acre  
Available in: 1 lb. jug



### Triclopyr 4

Broadleaf Herbicide

For control of woody plants, annual and perennial broadleaf weeds in forests, grass pastures and rangeland. Also in non-crop areas, industrial sites and non-irrigation ditch banks.

Rate: 2-8 quarts per acre  
Available in: 2.5 gal jug



### Triplet SF

Broadleaf Herbicide

Triplet SF is a concentrated, three-way Amine formulation of 2,4-D, MCPP, and Dicamba. It controls dandelions, knotweed, clover, chickweed, spurge, and most annual and perennial broadleaf weeds. Add Chameleon to increase performance at low volume rates.

3¼-4 pints per acre  
Available in: 2.5 gal jug/30 gal drum



## Specialty Herbicides

### Barrier Herbicide 4G

Specialty Weed Control

A residual barrier herbicide for landscape ornamentals, road ways, parks, around buildings, hedges, trees, fence lines, and sports grounds. Season-long control of annual and perennial grasses and broadleaf weeds with one application.

Rate: 2.3-4.6 pounds per 1,000 square feet  
100-200 pounds per acre  
Available in: 50 lb. bag



### Certainty

Specialty Weed Control

Certainty is a selective herbicide for control of annual and perennial grass and broadleaf weeds in highly managed Kentucky bluegrass and popular native grass stands. Certainty also controls yellow nutsedge, johnsongrass, white clover, chickweed, and many more.

Rate: 0.5 ounces per acre  
Available in: 1.25 oz. package



Always check product labels for specific rates.



## Specialty Herbicides

### GlyphoMate 41

Specialty Weed Control (Roundup for water)

Weed & Grass killer plus Aquatic Herbicide.

A unique formulation containing 41% glyphosate and a surfactant.

GlyphoMate 41 is labeled for most aquatic sites plus landscaping plantings, turf renovation, nurseries, roadsides, farmsteads, orchard floors, fallow land and many other approved uses. This product allows you to buy one product instead of two.



Rate: 4.2-10.6 pints per acre

Available in: 1 gal jug

### Glyphosate/Honcho T&O

Specialty Weed Control (Roundup)

Powerful and effective Honcho controls and eliminates a wide array of tough grasses and weeds. Honcho is a non-selective, broad-spectrum weed control for many agricultural systems and farmsteads. It is a post emergent, systemic herbicide with no soil residual activity.

Honcho is generally non-selective and gives broad-spectrum control of many annual weeds, perennial weeds, woody brush, and trees. It is formulated as a water-soluble liquid. Visible effects of Honcho are a gradual wilting and yellowing of the plant which are typically visible within 2 to 4 days.



Rate: 0.5-5 quarts per acre

Available in: 2.5 gal jug

### ProDeuce/ Razor Burn

Specialty Weed Control (Roundup/Barricade)

ProDeuce is a non-selective post-emergent herbicide that controls broadleaf weeds and grasses combined with a pre-emergent for broadleaf weed and grass control. Especially effective for fence lines, driveway and sidewalk cracks and to control growth around trees.

Contains Glyphosate and Prodiamine. Prevents re-growth for 6 months or more depending on amount applied.

Razor Burn combines the fast contact activity of diquat with the systemic control of glyphosate in one high-performance liquid formulation. Razor Burn can be used in general non-crop and industrial sites, on dormant turfgrass, in turfgrass renovation areas (except for commercial sod farms), or in parks, recreational and residential areas. For the fastest burn and the quickest turn, try

Nufarm Razor Burn.

Rate: 3-6 ounces per 1,000 square feet in appropriate amount of water

Available in: 64 oz. jug



### Pronto

Specialty Weed Control (Roundup/Imazapyr)

Concentrated liquid provides total, one-year control of unwanted grasses & weeds. Pronto kills existing weeds & prevents new weeds.

Use Pronto only in areas where *no* vegetation is desired such as gravel driveways, patios, around propane tanks, and in fence rows.

Rate: 3-9 ounces per gallon

Available in: 1 gal jug



### Snapshot

Specialty Weed Control

Snapshot is a selective pre-emergent herbicide that provides control of listed annual grasses and broadleaf weeds in landscape ornamentals, ground covers, perennials, non-bearing fruit and nut trees, container grown ornamentals, non-bearing vineyards, field-grown ornamentals and non-cropland.

Rate: 100-200 pounds per acre

Available in: 50 lb. bag



Always check product labels for specific rates.





# Insecticides

## Firebird LCO

T&O Insecticide

Firebird LCO is a fast acting insecticide that controls numerous insects and mites on trees and turf grass. Insects controlled include armyworms, cutworms, ants, fleas, grasshoppers, leafhoppers, Japanese beetle, ticks, mites, mosquitos, and many more. Firebird LCO is a non-restricted product and can be used on lawns, landscape ornamentals and other residential areas.

Rate: 0.18-1 ounce per 1,000 square feet  
Available in: 1 gal jug



## Hawk-I 75 WSP

T&O Insecticide

Hawk-I in a liquid application form for foliar application to control major turf and ornamental pests including northern masked chafer, Japanese beetle, European chafer, European crane fly, green June beetle, cutworm, white grub larvae, aphids, leaf miners, and many more.

Rate: 1.6 ounces per 8,250 square feet  
Available in: 1.6 oz.-case of 48



## Mallet .5G

T&O Insecticide

Systemic insecticide provides residual protection of turfgrass from grubs and other turf pests as well as protecting ornamentals, trees and shrubs from sucking and piercing insects, residual activity also controls pests in the soil. It takes just one application of Mallet .5G to achieve consistent, persistent control of insects.

Rate: 1.4-1.8 pounds per 1,000 square feet  
Available in: 30 lb. bag



## Menace GC 7.9%

**Restricted Use**  
T&O Insecticide

Menace GC 7.9% starts working on contact to control insects, mosquitos and mites in both larval and adult stage, and Menace keeps pests down with proven residual control. Menace GC 7.9% can be used in greenhouses and nurseries, as well as on golf courses and on ornamental turf in landscape area.

Rate: 0.18-1 ounce per 1,000 square feet  
Available in: 1 gal jug



## Zylam 20 SG/Liquid

T&O Insecticide

A 20% a.i. soluble granule or liquid formulation of dinotefuran, a third generation neonicotinoid insecticide. Provides outstanding control of damaging turfgrass pests including both root- and leaf-feeding insects on your most troublesome turf areas.

Rate: 2.7 pounds per acre  
Available in: 32 oz./2.7 lb. jug



Always check product labels for specific rates.



## Erosion Control

Blankets	MN DOT Category	WI DOT Category
Netles	No Category	-
Single Net Straw	2	Class I Type A
Double Net Straw	3	Class I Type B
Double Net Straw/Coconut	4	-
Double Net Coconut	5	Class II Type B
Single Net Excelsior	2	-
Double Net Excelsior	3	-
<b>Staples</b>		
6" Sod Staples	3 & 4	-
6" Heavy Duty Sod Staples	3 & 4	-
4" Sod Staples	1 & 2	-
4" Heavy Duty Sod Staples	1 & 2	-
Round Top Staples	No Category	-
<b>Mulch</b>		
BFM	Type 8	Type A
SM	Temporary Cover	-
Wood Mulch	Type 5	-
Blend Mulch	General Use	-

## Mulch Application Guide

Mulch 50 Lb. bales	Water	1,500 Acres		2,000 Acres		2,500 Acres	
		Sq. Ft	Acres	Sq. Ft	Acres	Sq. Ft	Acres
1	100	1,452	0.033	1,089	0.025	871	0.02
3	300	4,356	0.099	3,267	0.075	2,614	0.06
5	500	7,260	0.166	5,445	0.125	4,356	0.10
7	700	10,164	0.233	7,623	0.175	6,098	0.14
9	900	13,068	0.299	9,801	0.225	7,841	0.18
11	1,100	15,972	0.366	11,979	0.275	9,583	0.22
13	1,300	18,876	0.433	14,157	0.325	11,326	0.26
15	1,500	21,780	0.499	16,335	0.375	13,068	0.30
17	1,700	24,684	0.566	18,513	0.425	14,810	0.34
19	1,900	27,588	0.633	20,691	0.475	16,553	0.38
21	2,100	30,492	0.699	22,869	0.525	18,295	0.42
23	2,300	33,396	0.766	25,047	0.575	20,038	0.46
25	2,500	36,300	0.833	27,225	0.625	21,780	0.50
27	2,700	39,204	0.899	29,403	0.675	23,522	0.54
29	2,800	32,108	0.966	31,581	0.725	25,265	0.58



## Fertilizer

### GREENGUARD™

#### 8-20-4

**Hydro Seeding Liquid Fertilizer**

This fertilizer is specially formulated for Specialty Turf & Ag as a liquid starter and hydro-seeding fertilizer. It is high in phosphorus and has bio-stimulants for excellent seed establishment. This fertilizer is also a great option for other seeding and sodding projects.

**Derived From:**

Phosphoric Acid, Potassium Hydroxide, Aqua Ammonia, Urea, Focus, Sugar

**Rate:**

12-18 ounces per 1,000 square feet.

3-6 gallons per acre

### GREENGUARD™

#### 15-0-0-6 Fe

**Tour Green Liquid Fertilizer**

Excellent for tournaments, maintaining turf color under stress, or to add more color to your regular fertilizer applications. Safe to use 3-5 times per year.

**Derived From:**

Iron Sulfate, Urea, Ammonium Hydroxide, Citric Acid

**Rate:**

2-8 ounces per 1,000 square feet.

### GREENGUARD™

#### 4-0-1

**Pro-Quench Liquid Fertilizer**

This is a liquid fertilizer and water management product formulated to improve germination and plant establishment. Pro-Quench is designed to jump start new seedlings, sod, or transplanted trees and shrubs. Pro-Quench is effective in enhancing germination, promoting root development, and will improve water management. It is also effective in maintaining healthy plants during periods of heat stress. Pro-Quench will reduce watering by up to 50% when applied according to directions. It is ideal for lawn care providers, hydro-seeders, landscapers, and nursery growers.

**Derived From:**

Aqua Ammonia, Calcium Nitrate, Sugar, Focus

**Rate:**

11.75 ounces per 1,000 square feet

### GREENGUARD™

#### 15-2-15

**Pro Tour Liquid Fertilizer**

Developed to produce uniform growth, maintain color, and improve stress resistance. Formulated with chloride-free fertilizer ingredients. Contains humic acid, kelp extract, and the highest quality HEDTA an EDTA chelated micronutrients. This formulation also contains 50% controlled release nitrogen.

**Derived From:**

Urea-Triazone, Potassium Carbonate, Potassium Thiosulfate, Monopotassium Phosphate, Urea, Copper EDTA, Manganese EDTA, Zinc EDTA, Humic Acid, Fulvic Acid, Focus

**Rate:**

To apply .1lb of Nitrogen per 1,000 square feet use 7.25 ounces or 2.46 gallons per acre.

### GREENGUARD™

#### 24-0-6

**Liquid Fertilizer**

Excellent low cost formula for maintaining color and uniform growth on healthy greens. This formulation contains 50% controlled release nitrogen, chloride-free potassium, humic acid and kelp extract to improve performance. Excellent for greens and tees.

**Derived From:**

N-Sure, Potassium Nitrate, Potassium Carbonate, Urea, Iron HEDTA, Focus

**Rate:**

To apply .1 lb. of Nitrogen per 1,000 square feet use 4.9 ounces or 1.67 gallons per acre.

Always check product labels for specific rates.



## Fertilizer



### 3-4-5

#### Plant Starter Plus Dry Fertilizer

This is an organically-based starter fertilizer developed to start seeds faster, enhance root development, and as a transplanting aid for bare root trees and shrubs. Plant Starter Plus contains all of the key building blocks essential to growing healthy plants. Plants started from seeds, cuttings, or plugs are bigger in size, look healthier, are easier to maintain, are more uniform in size, and easier to transplant when this product is used. Plant Starter Plus is a non-burning fertilizer safe for all plants.

#### Derived From:

Carouse, Fish Meal, Gypsum, MAP, RL-37, Soft Rock Phosphate, SOP, Sul-PO-Mag

#### Rate:

15 lbs. per 1,000 square feet.

This bag will apply 1lb of Nitrogen when put down across 1,500 square feet.



### 7-8-7

#### Vegetable & Flower Dry Fertilizer

This is more than just a garden fertilizer. It can also be used as a top dress for trees, shrubs, and bushes to give them a healthy color and size. It will help build roots quickly and increase yield, flavor, color, and length of bloom for flowers and vegetables. Use Vegetable & Flower early in the spring to perk up and promote new growth for trees, shrubs, and bushes.

#### Derived From:

AMS, Gypsum, MAP, Soft Rock Phosphate, SOP, Sul-PO-Mag

#### Rate:

10-15 lbs. per 1,000 square feet.

This bag will apply 1lb of Nitrogen when put down across 3,500 square feet.



### 8-9-6

#### Winterizer Dry Fertilizer

This low nitrogen formulation is designed to help lawns store energy and build roots so they can survive winter stress and rebound quicker in the spring. Winterizer is specially formulated to fight winter fungal diseases. Formulated for soils with low levels of phosphate as well as light sandy soil areas. This fertilizer contains 1% iron.

#### Derived From:

AMS, Gypsum, MAP, Milorganite, SOP, Sul-PO-Mag

#### Rate:

Maintenance- 5lbs per 1,000 square feet.  
Repair- 6-7lbs per 1,000 square feet.

This bag will apply 1lb of Nitrogen when put down across 4,000 square feet.



### 8-12-6

#### Soil Prep Plus Dry Fertilizer

Soil Prep Plus is specifically designed to provide all the basic nutrients needed to germinate seed and attach sod faster under all growing conditions. Soil Prep Plus is formulated to amend stockpiled soils, reclaimed pond soil, and sub-soils used as topsoil. Soil Prep Plus will consistently reduce inputs and establish grass faster than any other starter fertilizer.

#### Derived From:

AMS, Carouse, Gypsum, MAP, Nutri-Smart, Soft Rock Phosphate, SOP

#### Rate:

8-12 lbs. per 1,000 square feet

This bag will apply 1lb of Nitrogen when put down across 4,000 square feet.

Always check product labels for specific rates.



## Fertilizer



**10-0-8**

**Fall Care Dry Fertilizer**

Fall care is a winterizing fertilizer designed to help lawns store energy in the fall by building a larger root system. This process will help lawns emerge from winter in a healthier condition. Fall Care helps protect the plant against many winter fungal diseases. Fall Care is a low-nitrogen formula, excess nitrogen uses up plant energy that is needed to promote growth. This fertilizer contains 1% iron.

**Derived From:**

AMS, Gypsum, Milorganite, SOP

**Rate:**

5 lbs. per 1,000 square feet.

This bag will apply 1lb of Nitrogen when put down across 5,000 square feet.



**15-0-7**

**Spring Green Up Dry Fertilizer**

Spring Green-Up is formulated to kick start turf early in the spring by warming the soil. It provides enough nitrogen to start your lawn growing, but does not promote excess growth. The sulfates and iron in Spring Green-Up help promote deep, long-lasting color.

**Derived From:**

AMS, Gypsum, Milorganite, SOP, Urea

**Rate:**

5-6lbs per 1,000 square feet.

This bag will apply 1lb of Nitrogen when put down across 7,500 square feet.



**16-6-24**

**WI DOT Type B Dry Fertilizer**

This fertilizer is blended to comply with Wisconsin DOT specifications for type B fertilizer.

**Derived From:**

SOP, Urea, MAP, Gypsum

**Rate:**

5-8 pounds per 1,000 square feet.

This bag will apply 1lb of Nitrogen when put down across 8,000 square feet.



**17-9-7**

**Lawn Starter Dry Fertilizer**

Formulated to maintain turf quality under high use conditions on football fields, driving ranges and tee boxes, or to repair winter damaged turf. This formula allows for the combination of nitrate and ammonia nitrogen in the same fertilizer application. It contains humic acid to stabilize nutrients and prevent them from quickly releasing. This is a 65% controlled release nitrogen fertilizer.

**Derived From:**

AMS, MAP, Milorganite, SOP, Sul-PO-Mag, Uflexx

**Rate:**

Maintenance-5lbs per 1,000 square feet.  
Repair-7lbs per 1,000 square feet.

This bag will apply 1lb of Nitrogen when put down across 8,500 square feet.



## Fertilizer



**22-0-6**

**Lawn Maintenance Dry Fertilizer**

This controlled release formulation contains Uflexx and Milorganite, Sulfate of Potash, and Sul-PO-Mag. This formulation will provide 8-10 weeks of high quality turf and controlled growth. It contains humic materials, micronutrients 1MG, 3.5S, 8Ca, .6Fe. This product is also formulated to meet the specifications for MN DOT type 2 fertilizer. This is a 100% controlled release nitrogen fertilizer.

**Derived From:**

Gypsum, Milorganite, SOP, Sul-PO-Mag, Uflexx

**Rate:**

3.5-4lbs per 1,000 square feet.

This bag will apply 1lb of Nitrogen when put down across 11,000 square feet.

**This Fertilizer is blended to comply with MN DOT type 2 Dry Fertilizer specs.**



**22-5-10**

**MN DOT Type 3 Dry Fertilizer**

Blended to comply with Minnesota DOT specifications for type 3 fertilizer. This blend is a 70% controlled release nitrogen fertilizer.

**Derived From:**

Gypsum, MAP, SOP, Uflexx, Urea

**Rate:**

4.5 lbs. per 1,000 square feet.

This bag will apply 1lb of Nitrogen when put down across 11,000 square feet.



**23-0-0**

**Athletic Mix Dry Fertilizer**

This controlled release formulation contains U-flexx and Milorganite to provide about 8 weeks of controlled growth. It contains humates and key micronutrients 1 Fe, 10 Ca, with many more in the milorganite. This fertilizer is excellent for summer maintenance. It is a 100% controlled release nitrogen fertilizer that contains 1% iron.

**Derived From:**

Uflexx, Milorganite, Gypsum

**Rate:**

3.5-4lbs per 1,000 square feet.

This bag will apply 1lb of nitrogen when put down across 11,500 square feet.



**33-0-6**

**Dry Fertilizer**

This controlled release formulation contains Uflexx and Milorganite, Sulfate of Potash, and Sul-PO-Mag. This formulation will provide 8 weeks of high quality turf and controlled growth. It contains humic materials, micronutrients 1Mg, 3.5 S, .5 Fe. This is a 100% controlled release nitrogen fertilizer.

**Derived From:**

Milorganite, SOP, Sul-PO-Mag, Uflexx

**Rate:**

2.5-3lbs per 1,000 square feet.

This bag will apply 1lb of Nitrogen when put down across 16,500 square feet.

Always check product labels for specific rates.



## Seed Blends



### All Blue

- 40% Arc Kentucky Bluegrass
- 35% Dragon Kentucky Bluegrass
- 20% Guinness Kentucky Bluegrass
- 5% Alexa Kentucky Bluegrass

All Blue will establish faster than common Kentucky bluegrass formulas, and then grow denser and darker because it is genetically diverse. A combination of four improved bluegrasses, All Blue is the cool season grass of choice because it provides the preferred dark, dense lawn "look" and is winter hardy, germinates faster is cleaner cutting, denser growing, and there is more pure seed in the bag. All Blue will adapt to a wider range of growing and maintenance conditions because it contains four varieties of bluegrass with unique characteristics. This combination will produce a fast establishing, high quality lawn that will compete aggressively with weeds.

**Blended for:** Home lawns / Sunny areas

Rate: 3-4 lbs./1,000 sq. ft.



### Athletic

- 30% Guinness Kentucky Bluegrass
- 20% Diva Kentucky Bluegrass
- 20% Dragon Kentucky Bluegrass
- 20% Ragnar II Perennial Ryegrass
- 10% Double Time Perennial Ryegrass

Athletic is formulated for high profile lawns, school playgrounds, parks, baseball and softball fields that receive moderate play. It tolerates ¾" mowing and is formulated with varieties that produce a dark, dense, low-growing turf that greens up early in the spring. Athletic has genetic diversity and the ability to adapt to a wide range of growing conditions. Athletic is especially suited for the North Central region.

**Blended for:** Sports Turf / Home Lawns / Golf Courses / Sunny areas

Rate: 4-6 lbs./1,000 sq. ft.



### Boulevard Mix

- 20% Salty Alkali grass
- 20% Diva Kentucky Bluegrass
- 20% Creeping Red Fescue
- 20% Slender Creeping Red Fescue
- 20% Perennial Ryegrass

To combat the high levels of salt in winter and the heat, drought and infertile summer conditions, our Boulevard Mix contains only the most salt tolerant, low fertility, heat and drought resistant varieties like Salty Alkali grass for winter/salt tolerance and Diva Kentucky Bluegrass and two fine fescues for improved turf quality with exceptional salt/heat/drought tolerance.

**Blended for:** Utility Turf / Sunny areas / Sun & Partial Shaded areas

Rate: 5-6 lbs./1,000 sq. ft.



### Dense Shade

- 25% Aberdeen Creeping Red Fescue
- 25% VNS Creeping Red Fescue
- 10% Ragnar II Perennial Ryegrass
- 10% Laser Poa Trivialis
- 10% Culumbra Chewings Fescue
- 10% Reliant IV Hard Fescue
- 10% Double Time Perennial Ryegrass

Intended for use on sites where the shade is too heavy to utilize bluegrass. The varieties in Dense Shade have been carefully selected to provide a fine textured lawn in areas where sunlight is not sufficient to sustain other lawn seed mixtures. The Dense Shade varieties are slower growing and require less food and water. These traits allow the grass to grow under most shade conditions.

Dense Shade is excellent for establishing new lawns or over seeding thin, damaged areas. Dense Shade may also be used as a low maintenance formula in full sun.

**Blended for:** Home Lawns / Utility Turf / Sunny areas / Shady areas / Sun & Partial Shaded areas

Rate: 4-5 lbs./1,000 sq. ft.



## Seed Blends



### Development Mix

- 30% Other Grasses
- 20% Gulf Annual Ryegrass
- 10% Mammoth Red Clover
- 10% Climax Timothy
- 10% VNS Creeping Red Fescue
- 10% Smooth Brome grass

Development is not intended to produce a lawn. The types of plants in the Development mix are intended to produce quick cover, soil stabilization, and grow under a wide range of conditions. It is specifically designed to meet the needs of developers and excavators who are shaping large pieces of land. The Development Mix is formulated to produce a quick, permanent cover that needs very little or no maintenance.

**Blended for: Utility Turf / Drought Tolerance**

Rate: 2-3 lbs./1,000 sq. ft.



### Ditch Mix

- 30% VNS Annual Ryegrass
- 20% Climax Timothy
- 10% VNS Creeping Red Fescue
- 10% Meadow Brome grass
- 30% Other Grasses

Quick establishing grass seed mix for erosion control.

**Blended for: Utility Turf / Sunny areas / Shady areas / Sun & Partial Shaded areas / Drought Tolerance**

Rate: 2-3 lbs./1,000 sq. ft.



### Freedom Blend

- 30% Azure Sheep's Fescue
- 30% Granite Hard Fescue
- 20% Culumbra II Chewings Fescue
- 20% VNS Creeping Red Fescue

Unique, "No Mow" mix for along bike paths, around ponds, in large open areas, on hillsides, or as a low maintenance lake cabin lawn. This versatile mix can be used as a decorative grass, and when allowed to go to seed will go from dark blue-green in early summer to golden yellow in August/September. Based on the desired lawn look, Freedom creates a uniform cover that requires as little as four mowings per season.

**Blended for: Golf Courses / Utility Turf / Sunny areas / Shady areas / Sun & Partial Shaded areas / Drought Tolerant**

Rate: 4-5 lbs./1,000 sq. ft.



### Low Maintenance

- 20% Arc Kentucky Bluegrass
- 20% Evergreen Creeping Red Fescue
- 20% VNS Creeping Red Fescue
- 20% Ragnar II Perennial Ryegrass
- 10% VNS Kentucky Bluegrass
- 10% Culumbra II Chewings Fescue

Low Maintenance produces a quality lawn under a wide range of conditions. Designed to reduce mowing, fertilizer, and water for a beautiful lawn- even under stress. Specialty Turf has carefully selected bluegrasses and fine fescues for genetic diversity, density, and persistence. Easy to maintain when mowed over 3" in hot summer months. Intended for use in low traffic areas.

**Blended for: Golf Courses / Utility Turf / Sunny areas / Sun & Partial Shaded areas**

Rate: 5-6 lbs./1,000 sq. ft.



## Seed Blends



### Pro Athletic

- 30% Diva Kentucky Bluegrass
- 20% Baron Kentucky Bluegrass
- 20% Guinness Kentucky Bluegrass
- 20% Arctic Green Perennial Ryegrass
- 10% Double Time Perennial Ryegrass

Pro Athletic was designed for baseball and softball fields, high wear sports fields, playgrounds, practice fields, golf course fairways, and tee boxes. It tolerates close mowing (1/2"). Pro Athletic is formulated for areas that receive high wear, and need fast recovery. Pro Athletic contains only varieties specifically bred for aggressiveness, density, root strength, recovery, and color. It is especially suited to the North Central climate.

**Blended for:** Sports Turf / Home Lawns / Golf Courses / Sunny areas / Sun & Partial Shaded areas

Rate: 4-6 lbs./1,000 sq. ft.



### Professional Landscape

- 30% VNS Creeping Red Fescue
- 20% Arc Kentucky Bluegrass
- 20% Arctic Green Perennial Ryegrass
- 17.5% Guinness Kentucky Bluegrass
- 10% Double Time Perennial Ryegrass
- 2.5% Alexa Kentucky Bluegrass

Professional Landscape has been carefully formulated to produce a high quality lawn when mowed at 3", fertilized regularly, and watered during stress periods. Professional Landscape was designed to perform in full sun to medium shade. It contains improved varieties proven to produce a quality home or commercial lawn under a wide range of growing conditions. Professional Landscape provides broad genetic diversity, high seedling vigor, early spring green-up, attractive color, and good performance under a wide range of maintenance programs. Professional Landscape is a good choice for establishing new lawns or over seeding thin, damaged areas.

**Blended for:** Home Lawns / Golf Courses / Sunny areas / Sun & Partial Shaded areas

Rate: 5-6 lbs./1,000 sq. ft.



### Quick N' Sure

- 30% VNS Creeping Red Fescue
- 27% Guinness Kentucky Bluegrass
- 25% P-IV MD Perennial Ryegrass
- 15% Gulf Annual Ryegrass
- 3% Alexa Kentucky Bluegrass

Quick N' Sure is an all-purpose seed formula designed to establish quickly. It is intended for use on residential, public, and commercial lawns that receive irregular management or where a high quality turf is not required. It is best suited to large open areas with low traffic and usage.

**Blended for:** Home Lawns / Utility Turf / Sunny areas / Sun & Partial Shaded areas

Rate: 5-6 lbs./1,000 sq. ft.



### Ultra Dark

- 20% Ginney Kentucky Bluegrass
- 20% Wildwood Kentucky Bluegrass
- 20% VNS Perennial Ryegrass
- 10% Arc Kentucky Bluegrass
- 10% Alexa Kentucky Bluegrass
- 10% Diva Kentucky Bluegrass
- 10% Double Time Perennial Ryegrass

Ultra Dark is formulated for lawns that require a groomed look without flaws and receive scheduled maintenance without a grounds crew on staff every day. Ultra Dark is formulated with low growing, very dark varieties that green-up early in the spring and maintain color late into the fall. These varieties will produce an elite lawn under lower maintenance when maintained at 3", but will tolerate mowing at 1/2". At lower height of cut they will require more water and fertilizer but less mowing.

**Blended for:** Sports Turf / Home Lawns / Golf Courses / Sunny areas

Rate: 4-6 lbs./1,000 sq. ft.



## Seed Blends



### Ultra Pro

- 20% Guinness Kentucky Bluegrass
- 20% Diva Kentucky Bluegrass
- 20% Aberdeen Creeping Red Fescue
- 20% VNS Perennial Ryegrass
- 10% Dragon Kentucky Bluegrass
- 10% Double Time Perennial Ryegrass

Ultra Pro creates the ultimate all-purpose lawn with newer lower growing varieties. These varieties require less water, fertilizer, and mowing. This new formula is genetically darker, exhibits excellent drought tolerance, greens up earlier in the spring, and has excellent disease resistance. The genetic diversity of Ultra Pro allows it to adapt to a wide range of growth and management conditions. Ultra Pro creates a picture perfect lawn without all of the extra work.

**Blended for:** Home Lawns / Golf Courses / Sunny areas / Sun & Partial Shaded areas

Rate: 5-6 lbs./1,000 sq. ft.



### Ultra Sport Turf

- 20% Wildwood Kentucky Bluegrass
- 20% Diva Kentucky Bluegrass
- 20% Ginney Kentucky Bluegrass
- 20% Ragnar II Perennial Ryegrass
- 10% Princeton P105 Kentucky Bluegrass
- 10% Double Time Perennial Ryegrass

Especially designed for high wear-and-tear areas, Ultra Sport is the playing surface of the pros. Ultra Sport contains only the top sports turf varieties specifically bred for high performance. Those traits include fast recovery, aggressive re-growth, wear resistance, root strength, disease resistance, color, and tolerance to close mowing (1/2"). Ultra Sport is a high-performance turf formula designed to take the high wear conditions of football, the high wear conditions of soccer, or the high use associated with municipal sports fields. Many seed mixtures are called athletic mixtures but Ultra Sport is built on genetic diversity, regional adaption, and has been evaluated under tough playing conditions.

**Blended for:** Sports Turf / Home Lawns / Golf Courses / Sunny areas

Rate: 4-6 lbs./1,000 sq. ft.



### TWCA Home Lawn

- 20% Diva Kentucky Bluegrass
- 20% TWCA Kentucky Bluegrass
- 20% Epic Creeping Red Fescue
- 20% TWCA Perennial Ryegrass
- 10% Guinness Kentucky Bluegrass
- 10% Double Time Perennial Ryegrass



The Turfgrass Water Conservation Alliance (TWCA) is a nonprofit organization dedicated to improving the environment through water conservation initiatives. TWCA recognizes and promotes plants that can thrive using limited amounts of water, helping to preserve our water resources. TWCA has created qualified varieties through rigorous testing protocols that have proven to maintain green cover using less water than other varieties. Minimum of 40% water savings! These two blends and their varieties were selected by Specialty Turf & Ag to meet the requirements of TWCA. They also carry our GreenGuard Guarantee.

**Blended for:** Home Lawns / Sunny areas / Drought Tolerance

Rate: 3.8 lbs./1,000 sq. ft.



### TWCA Sports Field

- 30% Diva Kentucky Bluegrass
- 20% TWCA Kentucky Bluegrass
- 20% Guinness Kentucky Bluegrass
- 20% Double Time Perennial Ryegrass
- 10% TWCA Perennial Ryegrass



**Blended for:** Sports Turf / Golf Courses / Drought Tolerance

Rate: 3.8 lbs./1,000 sq. ft.



Mix	Seeding Rate Lbs./1,000 Sq. ft.	Seeding Rate Lbs./Acre	Mix	Seeding Rate Lbs./1,000 Sq. ft.	Seeding Rate Lbs./Acre	
<b>Short Native</b>			<b>Quality Hay &amp; Pasture</b>			
30% Little Bluestem	¾	30-33	35% Vernal Alfalfa	½	18-20	
20% Side Oats Grama			25% Medium Red Clover			
20% Slender Wheatgrass			10% Climax Timothy			
10% Blue Grama			10% Bestfor Tetraploid Ryegr			
10% Canada Wildrye			10% Kemal Festulolium			
10% Sheep's Fescue			5% Alsike Clover			
5% White Ladino Clover			<b>Quality Lowland Clover Hay</b>			
<b>Medium-Tall Native</b>			<b>Water Way</b>			
30% Big Bluestem	¾	30-33	20% Smooth Bromegrass	¾-1	30-50	
20% Side Oats Grama			20% Climax Timothy			
20% Canada Wildrye			20% Tall Fescue			
10% Switchgrass			20% Annual Ryegrass			
10% Slender Wheatgrass			20% Kentucky Bluegrass			
10% Little Bluestem			<b>Buck Builder</b>			
<b>Wet Native</b>			<b>Deer Magnet</b>			
20% Big Bluestem	¾	30-33	50% Cereal Grain	¾	30	
20% Indiangrass			30% Sweet Perennial Ryegrass			
20% Slender Wheatgrass			15% Dwarf Essex Rape			
15% Canada Wildrye			5% Turnips			
15% Virginia Wildrye			<b>Deer &amp; Turkey</b>			
10% Switchgrass			50% Ladino Clover	½	20	
<b>Equine Pasture</b>			40% White Clover			
20% Sweet Tart Festolium	½ - ¾	20-25	10% Little Burnett Clover			
25% Climax Timothy			<b>Temporary Mixes</b>			
10% Kentucky Bluegrass			<b>Pounds per Acre</b>		100B Winter Wheat	100
10% Bestfor Tetraploid Ryegrass					110B Oats	100
10% Meadow Bromegrass					130B Quick Cover	100
5% Potomac Orchardgrass					<b>WI DOT MIX - Pounds per Acre</b>	
10% Creeping Rooted Alfalfa					WI DOT 10 - 130	WI DOT 60 - 130
10% White Ladino Clover					WI DOT 20 - 130	WI DOT 70 - 130
<b>Grass Master</b>			WI DOT 30 - 130	WI DOT 75 - 130		
20% Smooth Bromegrass	½	18-20	WI DOT 40 - 130	WI DOT 80 - 130		
20% Climax Timothy			<b>MN DOT Mixes</b>			
20% Candystick Festolium			<b>Pounds per Acre</b>		MN DOT 150 TS	40
20% Sweet Perennial Ryegrass					MN DOT 190 RS	60
10% Orchardgrass					MN DOT 240 SR	75
10% Annual Ryegrass			MN DOT 250 GR	70		
<b>Quality Alfalfa</b>			MN DOT 260 CT	100		
60% Vernal Alfalfa	½	15-20	MN DOT 270 RT	120		
10% Medium Red Clover					MN DOT 280 AG	50
10% Climax Timothy					MN DOT 310 NWT	82
10% Bestfor Tetraploid Ryegrass					MN DOT 325 PSM	84.4
10% Sweet Tart Festulolium			MN DOT 326 NMS	86.5		
			MN DOT 328 NEP	88		
			MN DOT 330 NSS	84.5		
			MN DOT 340 NSM	84.5		
			MN DOT 350 NGR	84.5		

# Sales Team

## Northwest MN

**Lach Glennie**

Sales

763-258-7424

[lglennie@specialtyturfag.com](mailto:lglennie@specialtyturfag.com)

## Twin Cities

**John Wiley**

Sales

612-867-2036

[jwiley@specialtyturfag.com](mailto:jwiley@specialtyturfag.com)

## Central MN & North Twin Cities

**Bill Stark**

Sales

763-248-3142

[bstark@specialtyturfag.com](mailto:bstark@specialtyturfag.com)

## Southeast MN

**Darren Pape**

Sales

507-259-8548

[dpape@specialtyturfag.com](mailto:dpape@specialtyturfag.com)

## Southwest WI

**Arnie Gudgeon**

Sales

715-781-7069

[agudgeon@specialtyturfag.com](mailto:agudgeon@specialtyturfag.com)

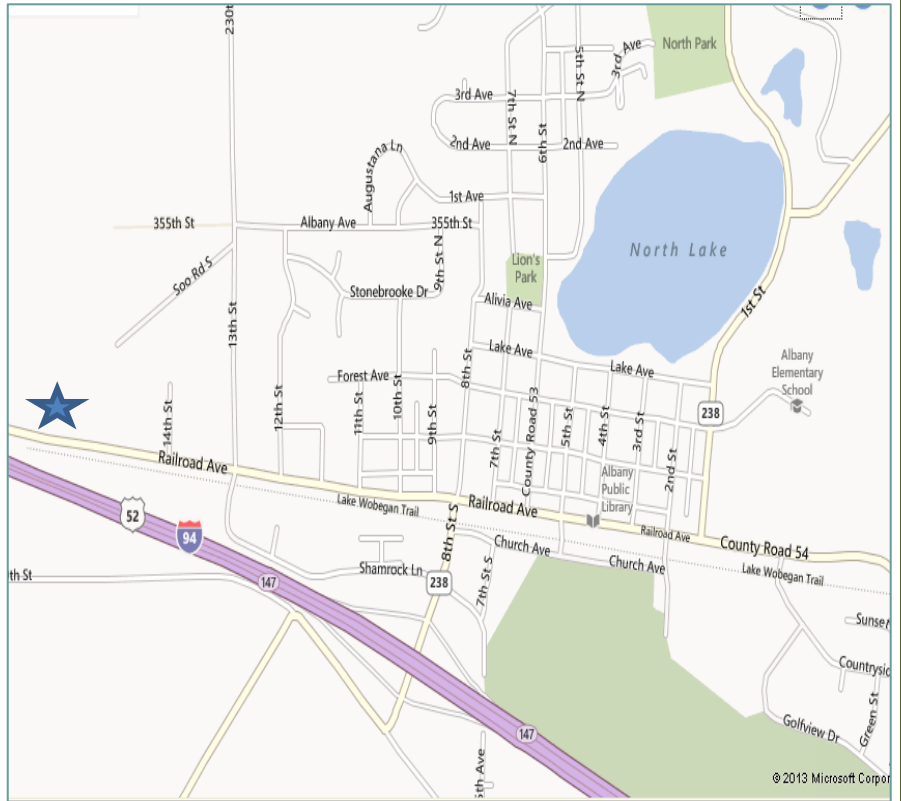
## Northwest WI & Northeast MN

**Kate Plachetka**

Sales

320-290-2527

[kplachetka@specialtyturfag.com](mailto:kplachetka@specialtyturfag.com)

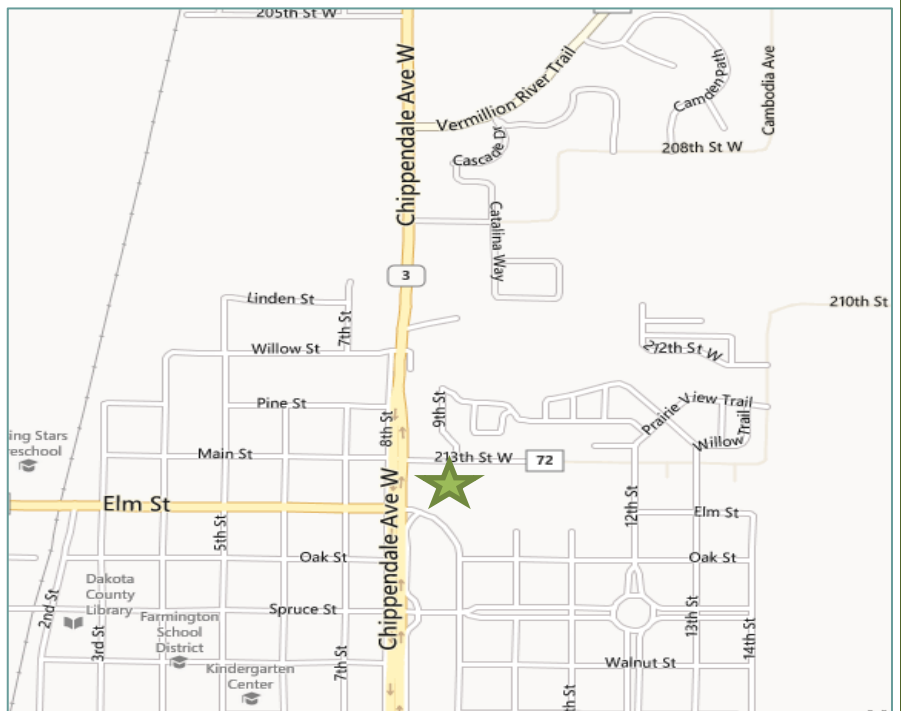


**Albany Location**

**1600 Railroad Avenue**

**Albany, MN 56307**

**Phone: 800-685-4521**



**Farmington Location**

**21130 Chippendale Avenue**

**Farmington, MN 55024**

**Phone: 651-463-4003**