

2013



RETAIL CATALOG

FOR MORE INFORMATION

CALL 800-685-4521

LAWN SEED BLANKET

Lawn Seed Blanket is a simple-to-use, environmentally-friendly product that results in a beautiful, green lawn. Biodegradable mulch blanket protects seeds from wind, sun and heat damage while holding seedlings in place. Germinates seeds faster while protecting growing seedlings.

Repairs bare spots.

Provides uniform seed coverage.

Prevents seed from washing away.

Available in 2.5x10 ft. rolls that covers 25 sq. ft.



ULTRA NU-STRAW

Ultra Nu-Straw is an enhanced natural straw product to apply on newly-seeded areas to enhance growth and reduce watering. Ultra Nu-Straw contains special bonding agents that helps the straw hold together and provide protection from erosion on slopes, heavy washout or windy areas in an earth-friendly way.

Use on slopes, heavy washout and windy areas.

Speeds up germination and saves time — water less often.

Available in 2.5 cu. ft. bag. Bag covers up to 500 sq. ft.

ULTRA STRAW BLANKET

The all-natural and easy way to protect seedlings while facilitating growth.

Stops erosion.

Contains seeding mulch and processed straw.

Non-toxic and biodegradable.

Safe for home, children and pets.

Available in 4x50 ft. rolls that covers 200 sq. ft. (Larger sizes available)



LANDSCAPER FABRIC

Our premium woven ground cover is comprised of a polypropylene material and demonstrates a tight weave. This fabric has line-marking every 12". Works well Behind boulder walls, as a geogrid for retaining walls, and a weed barrier under rock and mulch.

Polyspun is fabricated by sandwiching layers of fabric, which is then spunbond for strength and light blockage. This fabric is hydrophilically treated to increase water flow.

Spunbond polyester geotextiles are commercial grade landscape fabrics with high puncture resistance. Spunbond are the favorite among professional landscapers due to their strength and versatility.



Available: 3x50, 3x100, 4x50 and 4x100

(larger sizes available)



ULTRA TURFSTARTER

This all-natural, super moisture-absorbing, protective ground coating nourishes the soil with organic enzymes and plant extracts to promote new lawn growth. Safe for kids and pets.

Easy application with spreader.

One bag covers as much as two bales of straw.

Will not introduce weeds.

Available in 20 lb.

ULTRA LAWNPATCH

When you're patching the inevitable bare spots in your lawn, choose Ultra's all-natural products. This safe and biodegradable product spreads easier and absorbs moisture faster than any other combination product.

Safe for kids and pets.

Premium seed, natural fertilizer and mulch all in one package.

Revolutionary granulated mulch helps hold seeds in place.

Seed mixed for fast growth, thick coverage and durability.

Reclosable zipper bags.

Available in 5 lb., 20 lb.



Dog Patch (New 2013)

Dog Patch® is a biodegradable mixture formulated to quickly repair damage caused by pet urine in the lawn. This unique blend of premium grass seed and granulated mulch produces speedy results.

Dog Patch® Combo with Ultra Revive™ easy spray-on soil conditioner.

Available in 1.75 lb. bags with reclosable zippers.

ULTRA LAWNSEED



Quick Seed

Quick Seed is made up of 98% Perennial Ryegrass and 2% Annual Ryegrass

Available in 3 and 7 lb. bags

Sunny Mix

Sunny mix is made up of 50% Perennial Ryegrass, 30% Kentucky Bluegrass, and 20% Creeping Red fescue

Available in 3 lb. bags



Shady Mix

Shady mix is made up of 40% Creeping Red Fescue, 30% Boreal Creeping Red Fescue, 20% Perennial Ryegrass, and 10% Poa Trivialis

Available in 3 lb. bags



Sun & Shade Mix

Sun & Shade is made up of 30% Perennial Ryegrass, 25% Kentucky Bluegrass, 20% Boreal Creeping Red Fescue, 20% Creeping Red Fescue, and 5% Hard Fescue

Available in 3 and 7 lb. bags



ULTRA WILDFLOWERS



Combination seed, fertilizer and mulch — all in one package. Pre-measured blend of perennial and annual flower seeds.

Available in three mixtures: Butterfly & Hummingbird, Sun & Shade, and Shady.

Seedlings appear in 7 to 10 days.

Spreads easier and absorbs moisture faster.

Resealable bags with attention-getting graphics make for great displays.

Available in 1.75 lb. bags.

ULTRA REVIVE



Formulated to repair winter burn, salt and pet damage in high-traffic and shady areas, biodegradable Ultra Revive™ is the all-natural plant and soil nutrient additive to promote plant vigor and stimulate new growth.

Treats up to 2,500 square feet.

Enhances root development and strong growth.

Concentrated formula — 32 oz. bottle with adapter that connects to hose for application.

ULTRA QUENCH

Used by golf courses, landscapers, growers and interiorscapers, biodegradable Ultra Quench™ is all natural and safe for all plants, lawns, shrubs, flowers, trees and vegetables.

Treats up to 4,000 square feet.

Reduces watering by up to 50%.

Hygroscopic properties attract water molecules enhancing ground absorption.

Improves germination, jumpstarts seeding, sod, trees and shrubs.

Concentrated formula — 32 oz. bottle with adapter that connects to hose for application.



Fertilizers



Spring Green-Up 15-0-7

GreenGuard 15-0-7 Spring Green-Up is formulated to kick-start turf early in the spring by warming the soil. It provides enough nitrogen to start your lawn growing but does not promote excess growth. The sulfates and iron in Spring Green-Up help promote deep, long lasting color.

Available in 30 lb. Bags

Summer Care 12-0-0

Summer care was formulated to produce a dark green color, reduce water use, and maintain turf health under the stress of summer heat. The low nitrogen formula combines the high energy nitrogen of ammonium sulfate with the long-lasting nitrogen release of organic fertilizer to build roots and dark green color.

Available in 30 lb. Bags



Fall Care 10-0-8

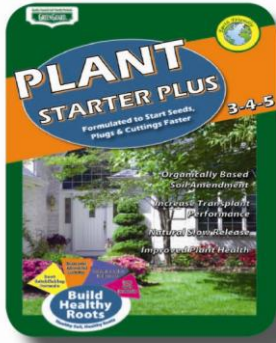


Fall Care is a winterizing fertilizer designed to help lawns store energy into the fall by building a larger root system. This process will help lawns emerge from winter in a healthier condition. Fall Care is manufactured using proprietary products that enhance the utilization of phosphorus in the soil. Phosphorus is a key mineral in aiding photosynthesis and the root-building process. Fall Care also helps protect the plant against many winter fungal diseases. Fall Care is a low nitrogen formula. Excess nitrogen uses up plant energy that it needs to promote growth.

Available in 30 lb. Bags

Plant Starter Plus 3-4-5

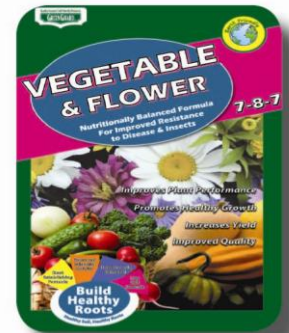
Plant Starter Plus is an organically-based starter fertilizer developed to start faster, enhance root development of plugs and cutting, and as a transplanting aid for bare root trees and shrubs. Plant Starter Plus is a complete fertilizer that will meet all of your plant's needs. Plant Starter Plus contains all of the key building blocks essential to growing healthy plants. Plants started from seeds, cutting, or plugs are bigger in size, healthier looking, easier to maintain, more uniform in size and easier to transplant when this product is used. They also need less water and pesticides, and are less affected by stressful conditions. Plants started with Plant Starter Plus will tolerate more handling, transplant easier, and produce more flowers and fruit. Plant Starter Plus is a non-burning fertilizer safe for all plants.



Available in 20 lb. Bags

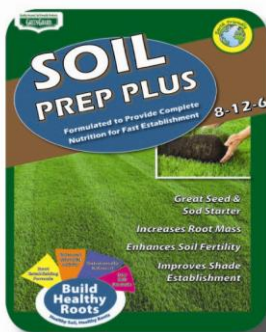
Vegetable & Flower 7-8-7

This is more than just a garden fertilizer. It can also be used as a top dress for trees, shrubs, and bushes to give them healthy color and size. Vegetable & Flower is a combination of organic and inorganic nutrients, formulated to promote soil life and supply beneficial nutrients. It will help build roots quickly and increase yield, flavor, color, and length of bloom for flowers and vegetables. Use Vegetable & Flower early in the spring to perk up and promote new growth for trees, shrubs, and bushes. In the nursery it also can be used as a top dress for potted plants and as a plant builder.



Available in 20 lb. Bags

Soil Prep Plus 8-12-6



Soil Prep Plus is a soil amendment formulated to restart the soil system. It is specifically designed to provide all the basic nutrients needed to germinate seed and attach sod faster under most growing conditions. Soil Prep Plus is also designed to improve problem soils such as stockpiled, reclaimed pond soil, or sub-soil used as topsoil. For native plants, Soil Prep Plus has shown to speed up establishment and reduce competitive grass pressure.

Available in 30 lb. Bags

Sales Team

Northwest MN

Lach Glennie

Sales

763-258-7424

lglennie@specialtyturfag.com

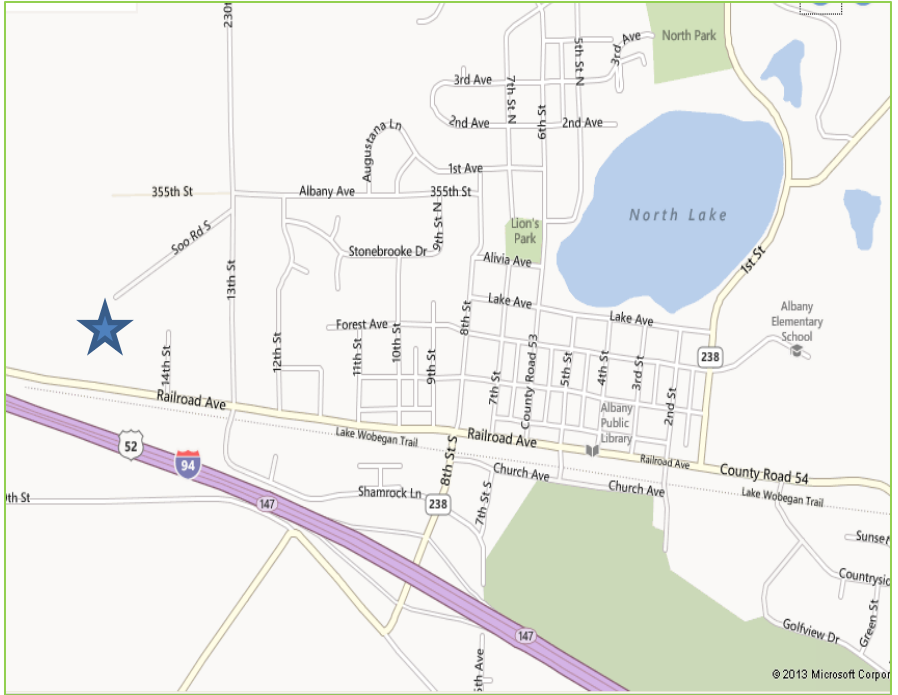
Twin Cities

John Wiley

Sales

612-867-2036

jwiley@specialtyturfag.com



Albany Location

1600 Railroad Ave

Albany, MN 56307

Phone: 800-685-4521

Central MN & North Twin Cities

Bill Stark

Sales

763-248-3142

bstark@specialtyturfag.com

Southeast MN

Darren Pape

Sales

507-259-8548

dpape@specialtyturfag.com

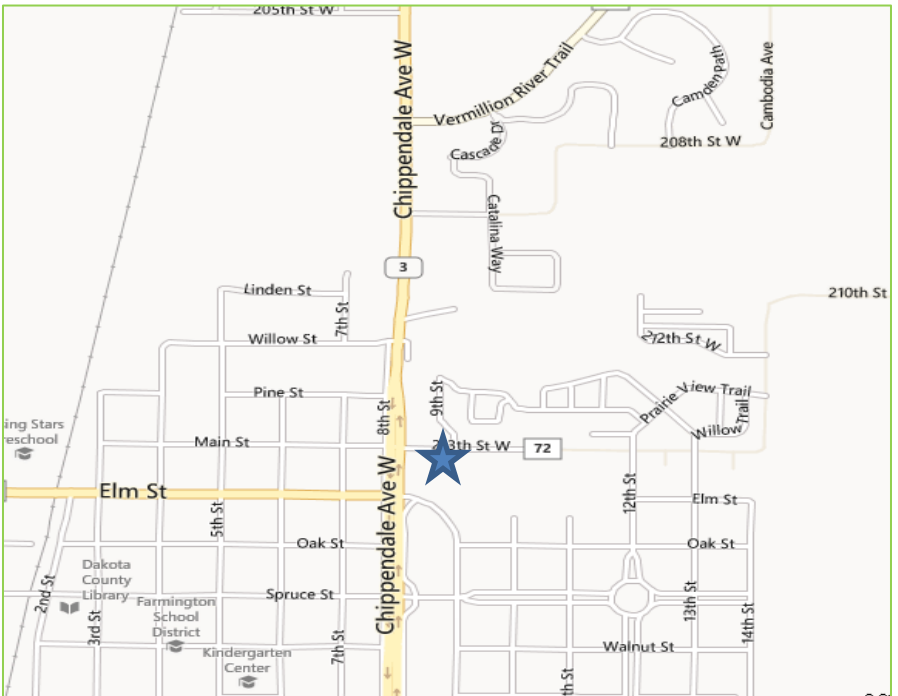
Southwest WI

Arnie Gudgeon

Sales

715-781-7069

agudgeon@specialtyturfag.com



Northwest WI & Northeast MN

Kate Plachetka

Sales

320-290-2527

kplachetka@specialtyturfag.com

Farmington Location

21130 Chippendale Ave

Farmington, MN 55024

Phone: 651-463-4003